

Human nutrition – 2022 June O Level 5090**1. June/2022/Paper_11/No.9**

Which row shows the diseases caused by lack of different nutrients in the diet?

	lack of iron	lack of vitamin C	lack of vitamin D
A	scurvy	anaemia	rickets
B	anaemia	rickets	scurvy
C	scurvy	rickets	anaemia
D	anaemia	scurvy	rickets

2. June/2022/Paper_11/No.11

What is an example of assimilation?

- A** absorption of glycerol into lacteals
- B** breakdown of glycogen to glucose in the liver
- C** building of proteins from amino acids
- D** release of a hormone from a gland

3. June/2022/Paper_12/No.10

Sometimes gall bladders become infected and have to be surgically removed.

How will this affect the functioning of the body?

- A** reduce the digestion of carbohydrates
- B** reduce the liver's ability to convert glucose to glycogen
- C** reduce the amount of glycerol absorbed from the alimentary canal
- D** reduce the volume of stored urine

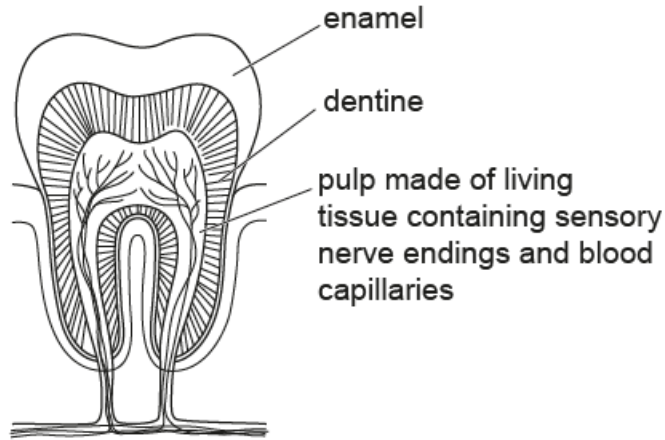
4. June/2022/Paper_12/No.11

What is an example of assimilation?

- A** absorption of glycerol into lacteals
- B** breakdown of glycogen to glucose in the liver
- C** building of proteins from amino acids
- D** release of a hormone from a gland

5. June/2022/Paper_21/No.7(a_b)

The diagram shows a section through a molar tooth of a human.



(a) (i) State the function of a molar tooth.

.....
..... [1]

(ii) The pulp is a living tissue.

Describe the movement of molecules in the pulp between the blood capillaries and the cytoplasm of the surrounding cells.

.....
.....
.....
.....
..... [4]

(b) Toothache is caused by inflammation of the pulp tissue and is often a sign of dental decay.

Describe the cause of dental decay and how it can be prevented.

.....
.....
.....
.....
.....
.....
..... [5]

6. *June/2022/Paper_22/No.6(b)*

(b) State, for a normal healthy movement of food through the small intestine,

one necessary component of a balanced diet

.....

one food that is a good source of this component

.....

one effect of malnutrition resulting from a lack of this component.

.....

[3]