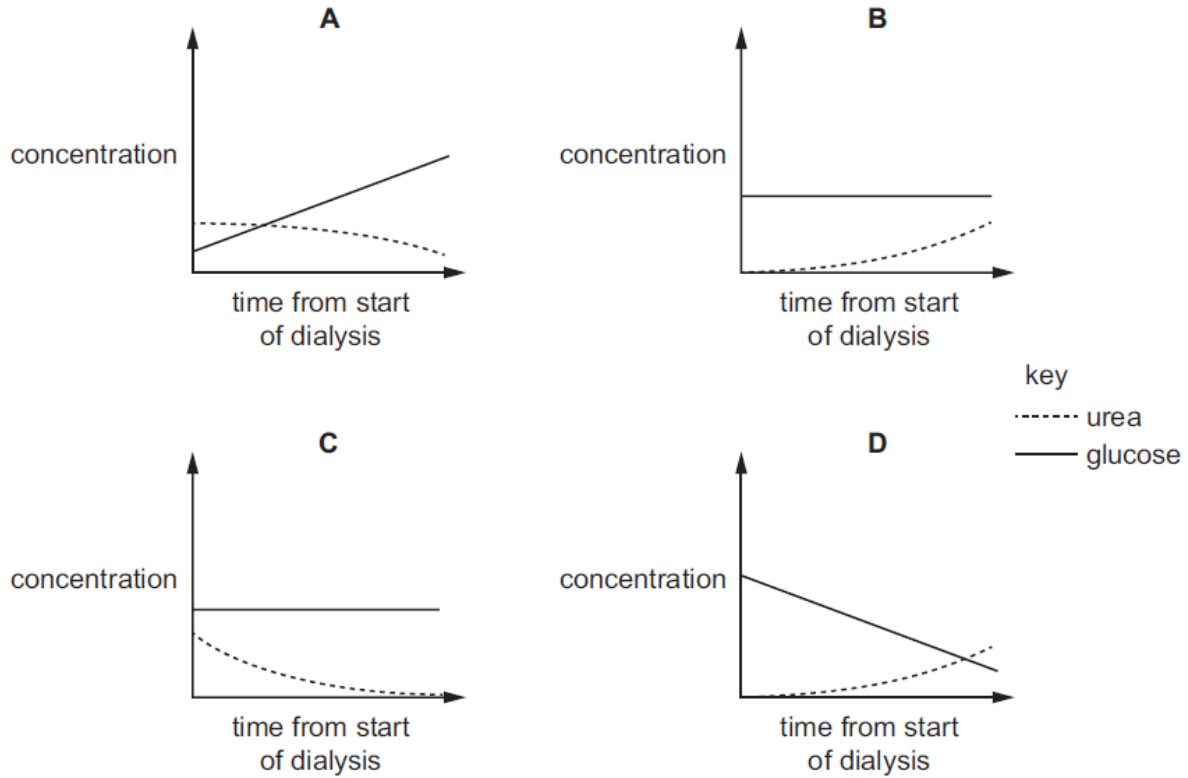


**Excretion – 2022 June O Level 5090**

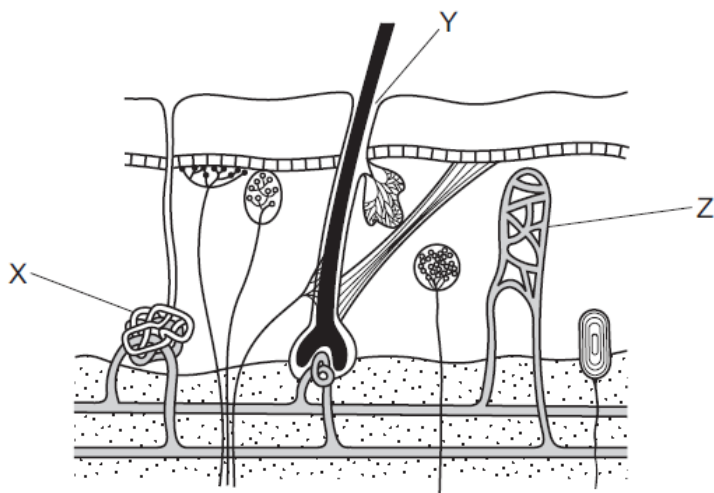
1. **June/2022/Paper\_11/No.20**

Which graph shows the change in concentration of molecules in the dialysis fluid during kidney dialysis?



## 2. June/2022/Paper\_11/No.21

The diagram shows some structures in human skin.

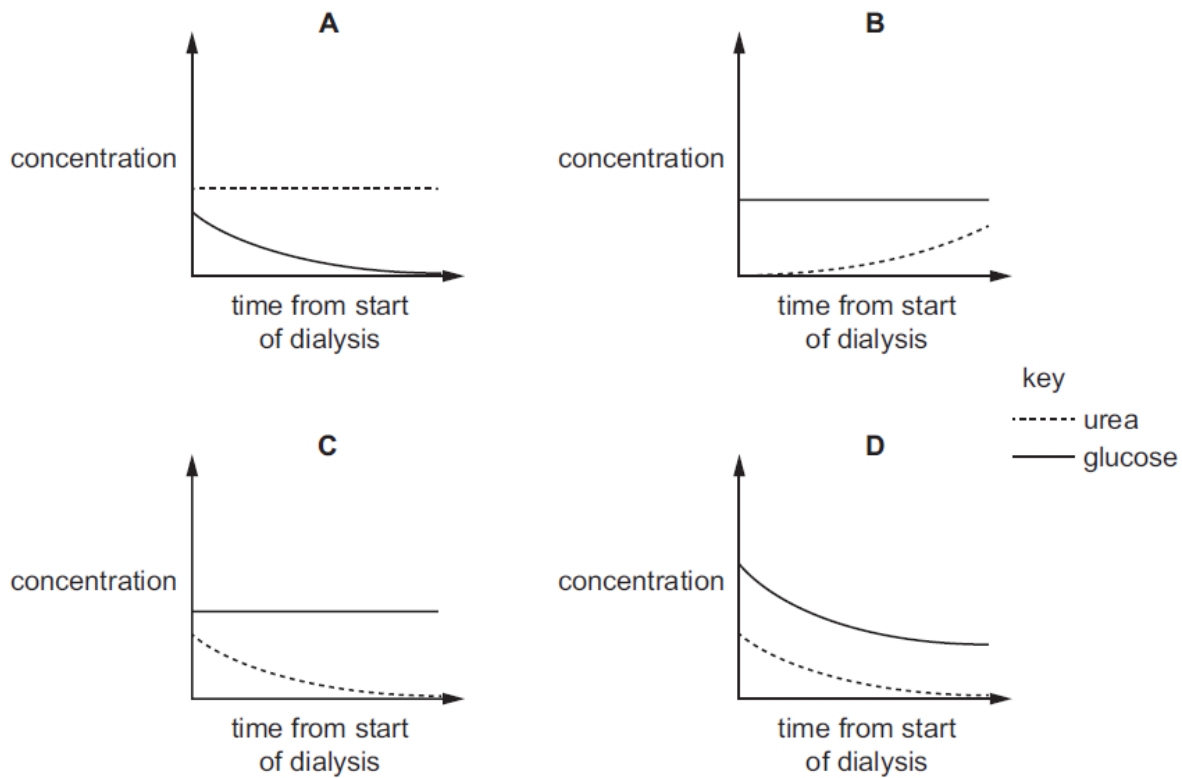


Which row shows the names of structures X, Y and Z?

	X	Y	Z
<b>A</b>	blood vessel	hair follicle	sweat gland
<b>B</b>	hair follicle	blood vessel	sweat gland
<b>C</b>	sweat gland	hair follicle	blood vessel
<b>D</b>	sweat gland	blood vessel	hair follicle

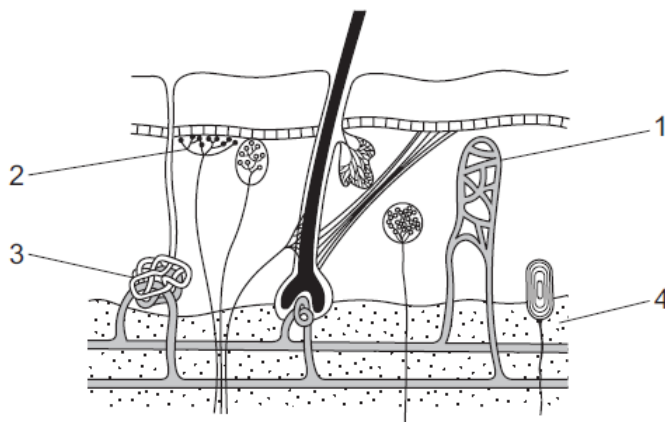
3. June/2022/Paper\_12/No.20

Which graph shows the changes in concentration of urea and glucose in the blood during kidney dialysis?



4. June/2022/Paper\_12/No.21

The diagram shows a cross-section of the human skin.



Which structures are involved in maintaining a constant body temperature?

- A 1 and 2 only    B 1, 2, 3 and 4    C 2 and 3 only    D 4 only

5. June/2022/Paper\_22/No.9(a\_b)

(a) Compare the ureter and the urethra in terms of their functions in adult humans.

.....  
.....  
.....  
.....  
.....  
.....  
.....  
.....  
.....  
..... [4]

(b) Explain how the process of dialysis maintains the correct chemical composition of the blood for a person with kidney disease.

.....  
.....  
.....  
.....  
.....  
.....  
.....  
.....  
.....  
.....  
.....  
.....  
.....  
.....  
.....  
..... [6]