

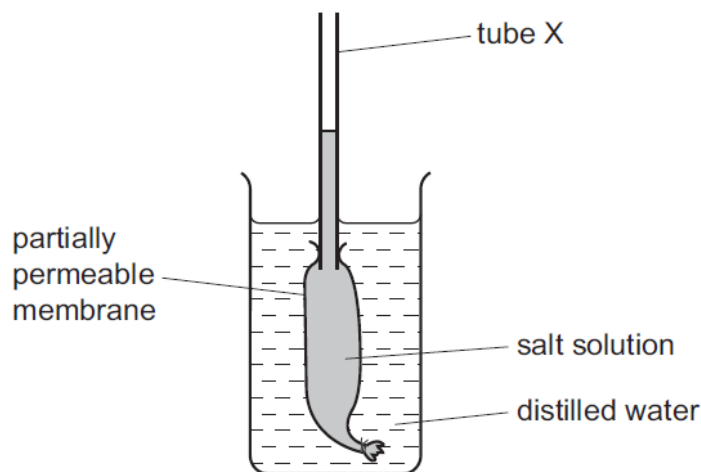
Movement into and out of cells – 2021 O Level 50901. **Nov/2021/Paper_11/No.2**

Which process occurs by diffusion alone?

- A movement of carbon dioxide into the palisade cells in a leaf
- B uptake of magnesium ions by root hair cells
- C movement of food from the stomach to the duodenum
- D transfer of glucose molecules from the ileum into the blood

2. **Nov/2021/Paper_11/No.3**

An experiment to investigate osmosis is set up as shown.



What happens to the height of the liquid in tube X and the concentration of the salt solution?

	height of the liquid in tube X	concentration of the salt solution
A	decreases	decreases
B	decreases	increases
C	increases	decreases
D	increases	increases

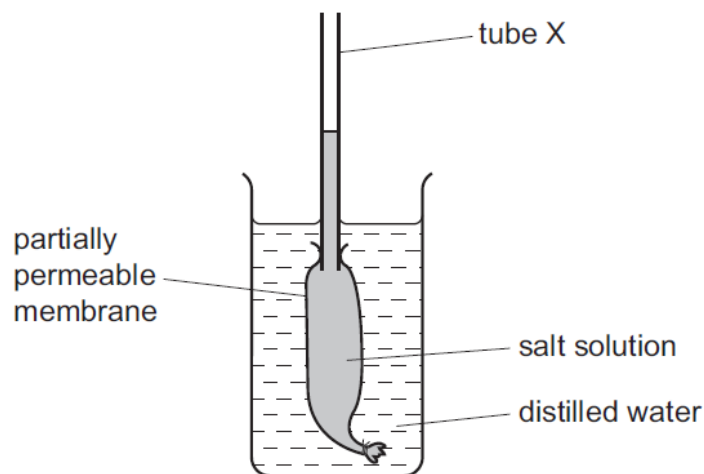
3. **Nov/2021/Paper_12/No.2**

Which statement about diffusion is correct?

- A Diffusion always involves the movement of water molecules.
- B Diffusion depends on the presence of a partially permeable membrane.
- C Diffusion only happens to molecules in a solution.
- D Diffusion only involves molecules moving down a concentration gradient.

4. [Nov/2021/Paper_12/No.3](#)

An experiment to investigate osmosis is set up as shown.



What happens to the height of the liquid in tube X and the concentration of the salt solution?

	height of the liquid in tube X	concentration of the salt solution
A	decreases	decreases
B	decreases	increases
C	increases	decreases
D	increases	increases

5. [Jun/2021/Paper_11/No.2](#)

A piece of plant tissue is transferred from a beaker of water into a concentrated sugar solution.

Which row describes what happens?

	movement of water	volume of tissue cells
A	into the cells	decreases
B	into the cells	increases
C	out of the cells	decreases
D	out of the cells	increases

6. Jun/2021/Paper_11/No.3

Which statements about active transport are correct?

- 1 Ions move from a region of high concentration to a region of low concentration.
- 2 Ions move across the cell membrane.
- 3 Energy released during respiration is used to move ions into or out of a cell.

A 1, 2 and 3 **B** 1 and 2 only **C** 1 and 3 only **D** 2 and 3 only